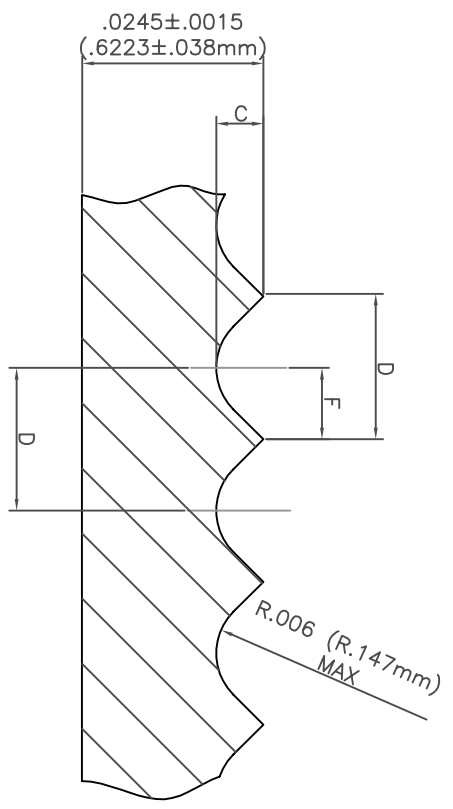
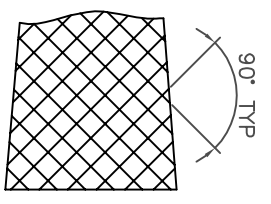
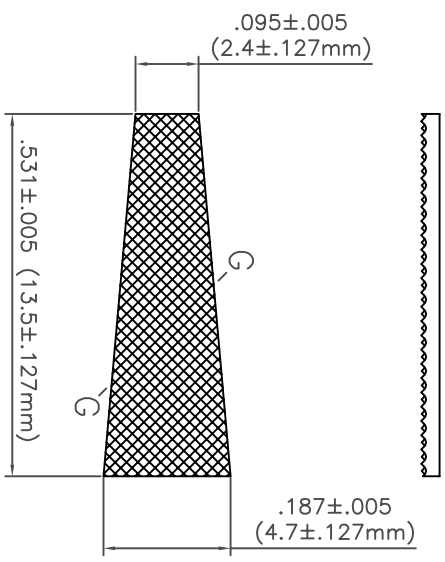
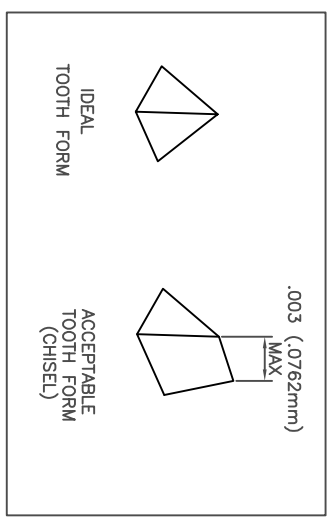


PROPRIETARY DESIGN RIGHTS
THIS DRAWING (PRINT, DISK), INCLUDING THE PRINCIPLE OF DESIGN, IS THE PROPERTY OF AND SUBMITTED BY ABRASIVE WEST LLC. IT IS NOT TO BE REPRODUCED OR COPIED IN WHOLE OR IN PART, REGARDLESS OF HOW ACCOMPLISHED, OR USED FOR FURNISHING INFORMATION TO OTHERS, OR FOR ANY OTHER PURPOSE DETRIMENTAL TO THE INTEREST OF ABRASIVE WEST LLC.



SECTION G-G ROTATION 45°

PART NUMBER	MATERIAL	TEETH (PER SQUARE INCH)	DIMENSIONS (INCH & MM)		
			C $\pm .0015"$ ($\pm .038mm$)	D $\pm .001"$ ($\pm .025mm$)	F $\pm .001"$ ($\pm .025mm$)
531-C-00000-024	VC 011	0 (SMOOTH)	0	0	0
531-N-00000-024	VC 320	0 (SMOOTH)	0	0	0
531-C-02500-024	VC 011	2,500	.0097" (.246mm)	.020" (.508mm)	.010" (.254mm)
531-N-02500-024	VC 320	2,500	.0097" (.246mm)	.020" (.508mm)	.010" (.254mm)
531-C-03600-024	VC 011	3,600	.0093" (.236mm)	.0167" (.424mm)	.008" (.212mm)
531-N-03600-024	VC 320	3,600	.0093" (.236mm)	.0167" (.424mm)	.008" (.212mm)
531-C-07000-024	VC 011	7,000	.0090" (.229mm)	.0119" (.302mm)	.0059" (.151mm)
531-N-07000-024	VC 320	7,000	.0090" (.229mm)	.0119" (.302mm)	.0059" (.151mm)
531-C-10000-024	VC 011	10,000	.0041" (.104mm)	.0100" (.254mm)	.005" (.127mm)
531-N-10000-024	VC 320	10,000	.0041" (.104mm)	.0100" (.254mm)	.005" (.127mm)
531-C-14400-024	VC 011	14,400	.0036" (.091mm)	.0083" (.211mm)	.0042" (.106mm)
531-N-14400-024	VC 320	14,400	.0036" (.091mm)	.0083" (.211mm)	.0042" (.106mm)



MATERIAL	COMPOSITION
VC 011	COBALT TANTALUM CARBIDE TUNGSTEN CARBIDE
VC 320	NICKEL TUNGSTEN CARBIDE
	12.0% 0.3% BALANCE
	12.0% BALANCE

REV	CHANGE	DATE	BY
①	-	-	-

UNLESS OTHERWISE NOTED:	
.XX	= $\pm .010$
.XXX	= $\pm .005$
.XXXX	= $\pm .0002$
ANGLES $\pm 1^\circ$	
INTERNAL R = .035max	
BREAK EDGES .030min	
SURFACE FINISH 64 U.O.S.	

CUSTOMER: CARBIDE	P/N
SCALE: N.T.S.	PART NAME: CARBIDE INSERT
DATE: 4/7/99	

ABRASIVE WEST LLC 1292 HUMBRACHT CIRCLE, UNIT F, BARTLETT, IL 60103 (630)-736-0818 FAX(630)-736-0883	Drawn by: RLC
AutoCad	ACAD DWG #
	OP-600-531-024